

# Xerox® DocuMate® 632

## Departmental Duplex Scans at 80 ipm

- Scans documents at 40 ppm in simplex and 80 ipm in duplex\*
- Legal size flatbed\*\*
- 99 OneTouch destinations can be customized for each person in the department
- 80 pages ADF capacity†
- Superior image quality Kofax® VRS™ Software included
- Visioneer® OneTouch® scanning to multiple applications including Microsoft SharePoint
- Daily Duty Cycle – 5,000 pages

\* Up to 80 ipm at 200 dpi, black & white

\*\* Actual flatbed size, 8.5" x 14"

† 20# paper



### Xerox® DocuMate® 632

The DocuMate® 632 is a departmental duplex flatbed scanner with a 100 page Automatic Document Feeder (ADF) that scans up to 80 images per minute (ipm) in duplex mode. The A4/legal flatbed is the only departmental scanner that can be programmed to automatically scan to 99 customisable applications or devices. Documents can be converted to text-searchable PDF in one easy step.

The Xerox® DocuMate® 632 is the perfect solution for company wide scanning solutions and enables businesses to achieve high levels of productivity by distributing fast, cost-effective departmental scanners throughout the organization.

### Work Smarter

The DocuMate 632's powerful software, robust functionality and hardware specifications deliver the speed and quality for departmental scanning. The DocuMate 632 offers file format flexibility including text-searchable PDF.

The included Kofax VRS Basic software provides capabilities such as auto exposure and wide angle de-skew. VRS also helps improve the accuracy of recognition software, thereby reducing the need for manual correction of intelligent character recognition and OCR results.

### Vertical Market Solutions

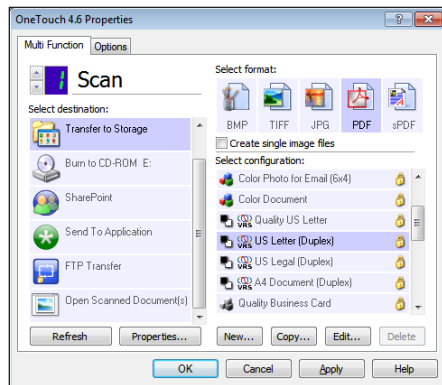
Regulatory compliance requirements have dramatically increased the need for companies to implement secure and reliable records for management and document capture solutions. Departmental scanners are ideal for document management in small to mid volume applications and may also be used to complement higher volumes products in distributed scanner settings.

Document capture solutions have become essential to meet the everyday document imaging needs of businesses in the finance, insurance, health care, transportation and education markets. Likewise, many law offices, courts, clients and administrators handle and manage substantial quantities of paper. Documents are the substance of communication, reference, negotiation and execution of contracts, laws and evidence. Fast reliable and cost effective document imaging solutions like the DocuMate 632 provide almost immediate return on investment when implemented in legal offices.

For more information: [www.UniLinkinc.com](http://www.UniLinkinc.com)  
**UniLink™** 800.666.2980  
Sales@UniLinkinc.com

# Xerox® DocuMate® 632

## Visioneer® OneTouch®



Visioneer® OneTouch® is an easy to use utility that connects the DocuMate® scanner with a powerful set of scanner settings to greatly improve the efficiency of your workflow – so that with one touch, the document is scanned automatically to email, Word, your printer, or simply a file folder.

In addition to scanning directly to all popular destinations, Visioneer OneTouch also links the DocuMate 632 with industry-leading document management software, such as Microsoft SharePoint®, DocuWare® and Xerox® DocuShare® – forming an easy to use workflow from paper to a selected destination.

A Software Development Kit (SDK) is also available which provides the ability to develop specific links and integrate them into the Visioneer OneTouch control panel quickly and easily.

## Kofax® VRS™ technology



Visioneer OneTouch with Kofax VRS is an integrated software solution that combines the ease of Visioneer OneTouch scanning, with the superior image quality achieved with Kofax VRS. Kofax VRS is an award winning patented technology that automatically insures the best possible image quality and OCR accuracy for scanned document images. As pages pass through the scanner, VRS performs a multipoint inspection of each document, instantly checking and adjusting alignment (skew), brightness, contrast and image clarity.

## Kofax VRS Pro Upgrade

An upgrade from Kofax VRS Basic to Kofax VRS Professional is available which provides additional features such as, advanced clarity, auto color detect, auto rotation, blank page detection, bleed through detection and lots more.

## Text Searchable PDF

Transform volumes of paper or photos into organized digital files that can be quickly found, used and shared. In searchable PDF format, the user can instantly search documents for keywords or phrases. This provides additional archival benefits beyond traditional storage, and the widely accepted PDF format lets everyone view and print documents – on any computer.

## Nuance OmniPage® Pro

Provides a precise OCR and layout retention solution, quickly turning scanned documents into editable, formatted text. The text can then be used in virtually any word processing, desktop publishing or web publishing program.

| Xerox® DocuMate® 632 Product Specifications |  |
|---|--|
| Model Number                                | XDM6325D-WU  |
| Scan Speed @ 200 dpi b/w, 150 dpi color)    | 40 ppm simplex / 80 ipm duplex                         |
| Scan Method                                 | Fast Duplex Sheetfed and Flatbed                       |
| Imaging Sensor                              | Dual charge-coupled device (CCD)                       |
| Light Source                                | Cold cathode fluorescent lamp                          |
| Optical Resolution                          | 600 dpi  |
| Output Bit Depth                            | 24-bit color, 8-bit grayscale, 1-bit black & white     |
| Interface                                   | Hi-speed USB 2.0 (1.1 compatible)                      |
| Dimensions (paper trays extended)           | 20.9"(w) x 16.2"(d) x 8.8"(h) (531 x 411.5 x 223.5 mm) |
| Weight                                      | 22.75 lb. (10.32 kg)                                   |
| ADF Minimum Document Size                   | 4.5" x 5.5" (114 x 140 mm)                             |
| ADF Maximum Document Size                   | 8.5" x 14" (216 x 356 mm)                              |
| ADF Capacity                                | 80 sheets (20 lb. paper)                               |
| Duty Cycle                                  | 5,000 pages/day  |



### Minimum System Requirements

- Pentium® IV or equivalent processor
- Windows® 8 / 7 / Vista® / XP®
- 2GB RAM
- 500 MB available hard drive space
- CD-ROM drive
- USB 2.0 port

### Contents

- DocuMate 632 Scanner
- Power Supply
- USB 2.0 Cable
- Quick Install Card
- Technical Support Card
- Paper Input Tray
- Spare ADF Pad Assembly
- Buttons Label
- CD-ROM including:
  - User's Manual
  - Kofax VRS 4.1
  - Nuance OmniPage Pro
  - Scanner Drivers (TWAIN®, ISIS and WIA Driver)
  - Pixel Translations QuickScan

©2013 Xerox Corporation. All rights reserved. Xerox®, Xerox and Design®, DocuMate® and DocuShare® are trademarks of, or licensed to Xerox Corporation in the United States and/or other countries. Visioneer and OneTouch® are trademarks of Visioneer, Inc. Kofax®, VirtualReScan® and VRS™ are trademarks of Kofax, Inc. Nuance® and OmniPage® are trademarks of Nuance Communications, Inc. or its affiliates in the United States and/or other countries. Microsoft®, SharePoint®, Windows Vista®, Windows®, the Windows logo and XP® are trademarks of Microsoft Corporation in the United States and/or other countries. Intel® and Pentium® are trademarks of Intel Corporation in the U.S. and/or other countries. Universal Serial Bus is a trademark of USB Implementers Forum, Inc. (USB-IF). TWAIN™ is a trademark of TWAIN Working Group. EMC®, Captiva®, ISIS® and QuickScan™ are trademarks of EMC Corporation. All other trademarks are the property of their respective owners and are hereby acknowledged. Prices, features, specifications, capabilities, appearance and availability of Xerox® products and services are subject to change without notice. 06/13. BR6869

