

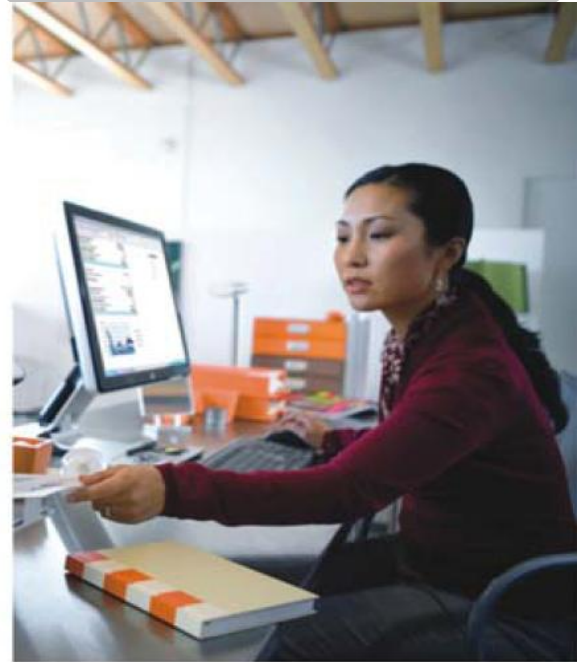


To order or for more information:

Tel: 1-800-666-2980

E-mail: [info@unilinkinc.com](mailto:info@unilinkinc.com)

Web: [www.unilinkinc.com](http://www.unilinkinc.com)



## HP LaserJet P1005 Printer



### Enjoy a high-end HP LaserJet printing experience on your desktop.

#### No compromises

Looking for a laser printer that meets both your budget and space requirements without compromising quality? Have it all with the HP LaserJet P1005 Printer—at an incredibly low price.

Print bold, crisp text and sharper images with new HP spherical toner and a redesigned, intelligent cartridge. Experience trouble-free printing with high-end features and legendary HP reliability, backed by a one-year limited warranty and award-winning support.

#### HP's smallest laser printing system

Make the most of your work area with this ultra-compact laser printer—HP innovation makes it possible. Our patented new spherical toner is controlled more efficiently, which allows for a smaller print cartridge, and as a result, a smaller printer.

And because sound can be as intrusive as size, the printer is specially designed for exceptionally quiet operation. You can enjoy the convenience of desktop printing without the annoying background noise.

Conserve resources as well as office space.

Engineered to use the smallest amount of power possible to get the job done, this printer stays cool and keeps your energy bills low.

#### Ready when you are

Don't waste time waiting for your documents. Other printers need time to warm up before printing the first page, but with no-wait Instant-on Technology your first page will print in half the time.<sup>1</sup>

Get the performance and reliability that is just right for your small business or personal needs with a 266 MHz processor, 2 MB of memory, and speeds up to 15 pages per minute (ppm).

#### Hassle-free

Now it's easier than ever to keep your desktop printer running smoothly, with many of the same technologies as HP's robust workgroup and department LaserJets. Intelligence in the print cartridge enables automatic print quality adjustments, so your documents always look great. Cartridge intelligence also helps ensure you never run out of toner: the cartridge communicates with the printer software to alert you when supplies are low and provide convenient options for online reordering. Just choose your preferred reseller and place your order through HP SureSupply.<sup>2</sup>

<sup>1</sup> Studies from Quality Logic show the typical print job is three to five pages. Instant-on Technology uses cutting-edge fuser technology to produce the first page faster when a printer is coming out of PowerSave mode so your print job is done sooner.

To order or for more information:

Tel: 1-800-666-2980

E-mail: [info@unilinkinc.com](mailto:info@unilinkinc.com)

Web: [www.unilinkinc.com](http://www.unilinkinc.com)

## HP LaserJet P1005 Printer

- 1 100-sheet output bin
- 2 One-door access to the easy-to-install print cartridge
- 3 Ultra-compact design fits almost anywhere
- 4 Power button
- 5 150-sheet adjustable main tray for standard paper
- 6 Hi-Speed USB 2.0 port
- 7 2 MB of memory and a 266 MHz processor



Front view



Rear view







To order or for more information:

Tel: 1-800-666-2980

E-mail: [info@unilinkinc.com](mailto:info@unilinkinc.com)

Web: [www.unilinkinc.com](http://www.unilinkinc.com)

## Get the quality only an HP LaserJet can deliver.

### Compatibility you can count on

You don't have to worry about Microsoft® Windows Vista™ compatibility. The HP LaserJet P1005 Printer is Vista-certified, meaning it will work seamlessly with computers running the new operating system.

The printer also supports HP Easy Printer Care Software, a tool that helps save time through consolidated printer management and supplies reordering.

### Legendary reliability and support

Reliable printers lower your overall labor costs by minimizing downtime. PC Magazine (August 2006) recently gave HP the Reader's Choice award in its annual service and reliability survey for the 15th year in a row. No other printer vendor can claim this record.

HP's award-winning customer service and support backs your printer with a one-year limited warranty, knowledgeable online support available 24/7 at [www.hp.com/support](http://www.hp.com/support), and phone support provided by trained HP agents. Plus, you can enhance your warranty protection with affordable HP Care Pack Services.



## Get the most out of your printer with HP accessories, supplies, and services.



**Q6236A**  
HP Wireless Printing Upgrade Kit



**Q6275A**  
HP USB Network Print Adapter



**C6518A**  
Connect directly with the Hi-Speed USB A to B printer cable (2-meter)



**CB435A**  
HP's all-in-one print cartridges and toner are specifically designed with the printer to deliver consistent quality and reliable, trouble-free printing



Choose from a selection of HP papers to create impressive, professional documents

### Product

HP LaserJet P1005 Printer CB410A

### Original HP print cartridge

Replacement HP LaserJet print cartridge. Average cartridge yield: 1,500 standard pages.<sup>3</sup> CB435A

### Cable

Hi-Speed USB A to B printer cable (2-meter) C6264A

### Connectivity

HP Wireless Printing Upgrade Kit Q6236A

HP USB Network Print Adapter Q6275A

### Service and support

HP 2-year Next Business Day Exchange Printing and Imaging UG605E

HP 3-year Next Business Day Exchange Printing and Imaging UG608E

### Paper

North America: [www.hp.com/go/paper](http://www.hp.com/go/paper)

USA: 1-800-477-5010

### Solutions

[www.hp.com/go/gsc](http://www.hp.com/go/gsc)

<sup>3</sup> Declared yield value in accordance with ISO/IEC 19752.



To order or for more information:

Tel: 1-800-666-2980

E-mail: [info@unilinkinc.com](mailto:info@unilinkinc.com)

Web: [www.unilinkinc.com](http://www.unilinkinc.com)

## HP LaserJet P1005 Printer

Technical specifications	HP LaserJet P1005 Printer (CB410A)
<b>Print speed<sup>4</sup></b>	Up to 15 ppm letter
<b>First page out</b>	Less than 8.5 seconds from PowerSave mode
<b>Resolution; enhancement technologies</b>	Up to 600 by 600 dpi (1200 dpi effective output); RET, HP FastRes 600 (600 dpi effective output), HP FastRes 1200 (1200 dpi effective output)
<b>Processor</b>	266 MHz
<b>Memory</b>	2 MB RAM, 64 KB EEPROM for NVRAM
<b>Recommended monthly volume<sup>5</sup></b>	250 to 1,500 pages
<b>Maximum monthly duty cycle<sup>6</sup></b>	Up to 5,000 pages
<b>Languages</b>	Host-based
<b>Paper</b>	
Input	150-sheet adjustable main tray
Output	100-sheet output bin
Two-sided printing	Manual two-sided printing
Sizes	Letter, legal, executive; postcards, envelopes (No. 10, Monarch); custom sizes: 3 by 5 in (76 by 127mm) to 8.5 by 14 in (216 by 356 mm)
Weights	16 to 43 lb bond (60 to 163 g/m <sup>2</sup> )
Types	Paper (laser, plain, photo, rough, vellum, archive), envelopes, labels, cardstock, transparencies
<b>Connectivity</b>	
Interfaces	Hi-Speed USB 2.0 port
Operating systems	Windows® 2000, XP Home, XP® Professional, XP Professional x64; Windows Server 2003 (32/64 bit); Works with Windows Vista; Mac OS X v10.3, v10.4 and v10.5
<b>Dimensions (w by d by h)</b>	13.66 by 8.82 by 7.64 in (347 by 224 by 194 mm)
<b>Weight (without print cartridge)</b>	10.3 lb (4.7 kg)
<b>What's in the box</b>	HP LaserJet 1005 Printer, introductory HP LaserJet print cartridge, <sup>7</sup> Getting Started Guide, printer documentation and software on CD-ROM, support flyer, power cord
<b>Warranty</b>	One-year limited warranty

Environmental ranges		Certifications	
Recommended temperature	50 to 90.5 degrees F (10 to 32.5 degrees C)	Safety	IEC 60950-1 (International), IEC 60825-1+A1+A2, UL/cUL Listed (US/Canada), EN 60825-1+A1+A2 Class 1, 21 CFR Ch. 1/SubCh. J & Laser Notice #50 (July 26th 2001) (Class 1 Laser/LED Device) GB4943-2001
Storage temperature	32 to 104 degrees F (0 to 40 degrees C)	EMC	CISPR 22: 2005/EN 55022: 2006 Class B, EN 61000-3-2: 2000 +A2, EN 61000-3-3: 1995+A1, EN 55024: 1998+A1 +A2, FCC Title 47 CFR, Part 15 Class B (USA), ICES-003, Issue 4, (Canada), GB9254-1998
Operating relative humidity	20 to 80 percent		
Altitude	0 to 10,000 ft (0 to 3,100 m)		
<b>Acoustics<sup>8</sup></b>			
Sound power	Active: 6.2 B(A); Ready: inaudible		
Bystander sound pressure	Active: 49.5 dB(A), Ready: inaudible		
<b>Power specifications<sup>9</sup></b>			
Required input voltage	110 to 127 V (±10 percent), 60 Hz (±2 Hz), 7 amp 220 to 240 V (±10 percent), 50 Hz (±2 Hz), 4.0 amp		
Power consumption	Active: 315 watts    Ready: 3 watts    Sleep: 3 watts Off: 0.6 watts		
Typical Electricity Consumption (TEC): 0.743 KWhr/Week			
ENERGY STAR® qualified models; see <a href="http://www.hp.com/go/energystar">www.hp.com/go/energystar</a>			

<sup>4</sup> Speed specification per industry standard testing methods.

<sup>5</sup> HP recommends that the number of printed pages per month be within the stated range for optimum device performance, based on factors including supplies replacement intervals and device life over an extended warranty period.

<sup>6</sup> Duty cycle is defined as the maximum number of pages per month of imaged output. This value provides a comparison of product robustness in relation to other HP LaserJet or HP Color LaserJet devices, and enables appropriate deployment of printers and MFPs to satisfy the demands of connected individuals or groups.

<sup>7</sup> Average cartridge yield 700 standard pages. HP CB435A replacement print cartridge yields approximately 1,500 pages. (Average cartridge yield 1,500 standard pages. Declared yield values in accordance with ISO/IEC 19752). For page yields and other cartridge options, see [www.hp.com/go/pageyield](http://www.hp.com/go/pageyield).

<sup>8</sup> Measured per ISO 7779 and declared per ISO 9296; values subject to change. For current information see [www.hp.com/support](http://www.hp.com/support). Configuration tested: base model, printing on A4 paper at 15 ppm.

<sup>9</sup> Power reported is the highest value measured using all standard voltages.



ENERGY STAR and the ENERGY STAR mark are U.S. registered marks. Microsoft, Windows, and Windows XP are U.S. registered trademarks of Microsoft Corporation. Windows Vista is either a registered trademark or trademark of Microsoft Corporation in the United States and/or other countries.

© Copyright 2007 Hewlett-Packard Development Company, L.P.

The information contained herein is subject to change without notice. The only warranties for HP products and services are set forth in the express warranty statements accompanying such products and services. Nothing herein should be construed as constituting an additional warranty. HP shall not be liable for technical or editorial errors or omissions contained herein.