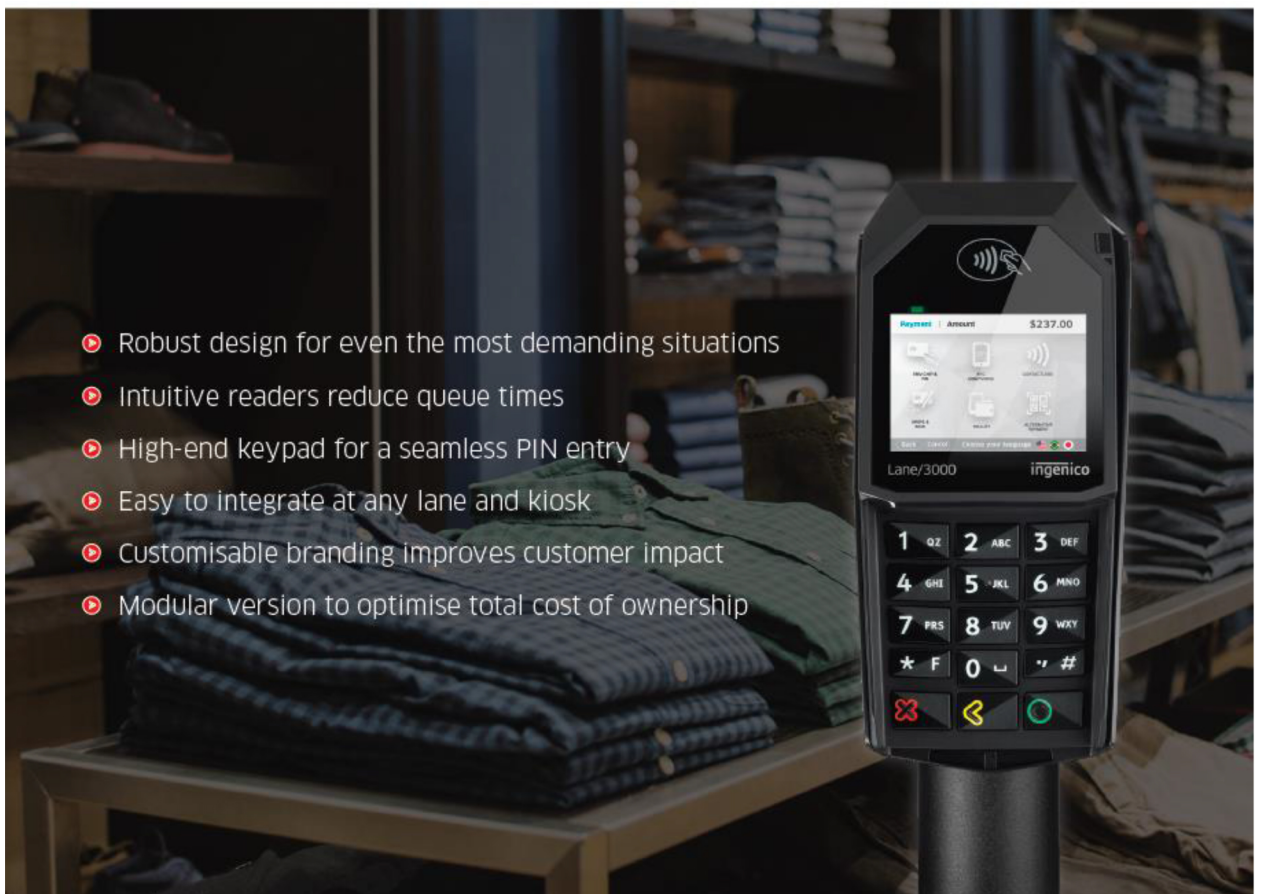


UniLink™



Lane/3000

Designed for fast payment at the lane



- ▶ Robust design for even the most demanding situations
- ▶ Intuitive readers reduce queue times
- ▶ High-end keypad for a seamless PIN entry
- ▶ Easy to integrate at any lane and kiosk
- ▶ Customisable branding improves customer impact
- ▶ Modular version to optimise total cost of ownership

The retail PIN Pad Lane/3000 is designed to manage thousands of transactions per day, and is ideal for busy retailers.

This cutting-edge terminal is available in two forms. The 'non-modular' model focuses exclusively on processing EMV payments for multilane checkouts. The 'modular' model includes optional high-end features upgradable in the field such as a camera, WiFi or Bluetooth. The benefit of having two variations means that businesses can choose whether they want to focus on the core payment or offer more flexibility by promoting a range of other innovative payment and communication options.



Designed to remain rooted at the lane, businesses who implement this terminal benefit from:

- Seamless contactless and EMV payments
- Leveraging previous Ingenico PIN Pad ranges (ISC, IPP) for an easy integration into a multilane retail store
- A heavy duty magnetic stripe reader
- A smartcard reader optimised to boost transaction speeds
- The ability to offer alternative payment methods thanks to an optional camera
- Sustainable design and packaging
- Over 2,500 unique payment apps that allow retailers to accept over 300 payment methods
- A dedicated contactless card reader zone which shows the amount on the screen – speeding up checkout times for customers
- A compact, robust design for easy integration into any environment, including semi-unattended retail store kiosks
- An optional capacitive screen with a large signature capability



**TELUM
TETRA**

Tough security

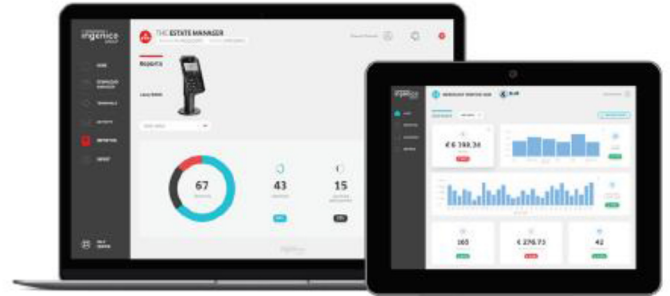
The Lane/3000 is certified and fully compliant with the latest global and local PCI regulations. The Telium TETRA OS has been future-proofed with top-of-the-line cryptography software and Ingenico's world-class peer-to-peer encryption technology to keep data safe. Since these terminals are designed to be fixed to each lane, they are equipped with anti-theft systems, such as Kensington locks, to strengthen physical security.

Compatible with Ingenico's suite of services

Keeping the solutions connected, the Lane/3000 works in unison with Ingenico's supporting service platforms, meaning retailers will have access to business services such as back office reporting. Software updates and day-to-day support deliver a hassle-free experience for those using this innovative range.



UniLink™



			MODULAR	NON-MODULAR
Processor	Application and crypto processor	Cortex A5, 64 bits	•	•
Memory	Internal External	256 MB Flash, 128 MB RAM Micro SD up to 32 GB	• Optional	• N/A
OS		Telium TETRA	•	•
SAM			Optional (Up to 3)	Optional (1)
Card reader(s)	Magstripe Second Magstripe (Dual Head) Smart card Contactless	ISO1/2/3, 500K reads lifespan ISO1/2, 500K reads lifespan EMV Level 1, 500K reads lifespan EMV Level 1	• Optional • •	• N/A • •
Camera		2M pixels (QR code library embedded)	Optional	N/A
Display	Colour	2.8" backlight, QVGA (320x240 pixels)	•	•
Touchscreen	Capacitive	Finger and stylus (100K lifespan signature)	Optional	Optional
Keypad		15 keys, raised markings, backlit 4 function keys (non-touch version)	• Optional	• Optional
Audio	Buzzer Audio Jack Speaker	Stereo Mono	• Optional Optional	• Optional Optional

			MODULAR	NON-MODULAR
Terminal connectivity	Wired Wireless	Ethernet 10/100 base T Wi-Fi and Bluetooth	• Optional	• N/A
Terminal connections	USB Serial Powered USB Powered RS 232 Powered ethernet External power supply	USB host USB slave 1 RS232 5 and 12 V (USB retail) 12 V POE Compliant with 802.3af (1)	• • • • Optional Optional	• • • • N/A Optional
Stand mounting		Universal Payment Mount (UPM)	•	•
Terminal size		83 x 180 x 43 mm (3.26x7.08x1.69")	•	•
Weight		254 g (8.89oz)	•	•
Environment	Operating temperature Storage temperature Relative humidity	0 to +50°C (32°F to 122°F) -20 to +70°C (-4°F to 131°F) 85% HR at +40°C (104°F)	• • •	• • •
Accessories	Privacy shield (factory mouted) Stylus kit	PCI compliant	• Optional	• Optional
Security	PCI PTS Anti-removal Anti-theft	PCI PTS 5.x certified Active connector removal Kensington lock receptacles Secure mounts available	• • • Optional	• • • Optional