



StrobeTM 500

Mobile Duplex Color Scanner Plus Docking Station

With Automatic Document Feeder



Supports USB- or wall-powered operation

Mobile and Desktop Flexibility in a Compact Scanner

- Use as a desktop ADF scanner in docking station
- Or take just the USB powered scanner on the road
- Scan up to 30 images per minute in duplex
- Visioneer OneTouch uses front panel buttons to scan to 6 selectable destinations
- ADF holds 20 pages

Flexibility to meet the needs of any job.

The Strobe 500 has all the features you expect in a powerful desktop scanner such as a 20-page Automatic Document Feeder, 30 images per minute duplex scanning speed, and Visioneer OneTouch with Kofax VRS technology. Then at the push of a button, the Strobe 500 ejects from its docking station to become a full function mobile scanner with USB-powered operation.

When your office is not contained within four walls and can be anywhere you are, you need a scanner with flexibility. Healthcare, real estate, construction, financial services, insurance are just some of the occupations the Strobe 500 was designed for. Whether scanning contracts, forms, receipts, photos, ID cards, handwritten notes or virtually any document of varying size or complexity, the Strobe 500 does its job so you can do yours.

For more information:

UniLinkTM

www.UniLinkinc.com

800.666.2980

Sales@UniLinkinc.com

visioneer. Strobe 500

Visioneer® OneTouch®

Visioneer OneTouch is an easy to use utility that connects the buttons on the Strobe scanner with a powerful set of scanner settings to greatly improve the efficiency of your workflow – so that with one touch, the document is scanned automatically to email, or Word, or your printer, or simply a file folder.



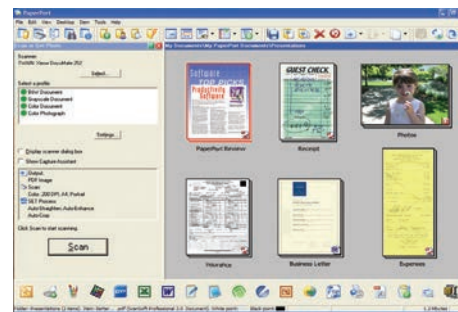
Text Searchable PDF

If you can't search your scanned documents by their content, you might as well be looking at paper again. The Strobe 500 can scan automatically to searchable PDF. It preserves the integrity of the scanned page so that layout, signatures, logos, photos, etc., remain intact,

but the text is OCR'd so that you can search the document by its content. This is very powerful when looking for a single document among hundreds or thousands.

Kofax® VRS™ technology

The Strobe 500 integrates Kofax VRS image enhancement technology into the OneTouch scanning process. VRS is the gold-standard in image improvement technology. Imperfect originals are automatically turned into perfect scans that are easier to read for the human eye and the computer's eye. OCR results are dramatically improved, file size is decreased and scans look as clear as the originals. And every page is custom corrected automatically so you can batch together clean, laser quality documents with your imperfect originals. The results are amazing.



Nuance® PaperPort®

Millions of professionals rely on PaperPort to save time and money by transforming paper documents into searchable digital documents. PaperPort combines the efficiency of document management, the convenience of superbly scanned documents and the power of creating PDF files, to bring a new level of operational proficiency to your organization.

Nuance® OmniPage Pro®

Provides a precise OCR and layout retention solution, quickly turning scanned documents into editable, formatted text. The text can then be used in virtually any word processing, desktop publishing or web publishing program.

Product Specifications

Model Numbers	STROBE-500 (Scanner + Docking Station) STROBE500-SA (Scanner Only) STROBE500-DS (Docking Station Only)
Optical Resolution	Up to 600 DPI
Output Bit Depth	24-bit Color, 8-bit Grayscale, 1-bit Bitonal
Scan Method	Fast Sheetfed Duplex and Front Sheetfed
Scan Speed*	
Black & White, 200 dpi	15 ppm Simplex / 30 ipm Duplex
Color, 200 dpi	15 ppm Simplex / 30 ipm Duplex
Auto Features	Crop, Des skew, Thresholding
OneTouch Scanning	Scan to 6 Front Panel Selectable Destinations
Interface	Hi-Speed USB 2.0 (USB 1.1 compatible)
Dimensions (Scanner Only)	11.7" x 2.8" x 3.3" (297 x 71 x 84 mm)
Dimensions (Scanner + Docking Station)	11.7" x 4.7" x 4.8" (297 x 119 x 122 mm)**
Weight (Scanner Only)	2.5 lbs (1.15 kg)
Weight (Scanner + Docking Station)	3.9 lbs (1.8 kg)
ADF Maximum Paper Size	8.5" x 14" (216 x 356 mm)
ADF Minimum Paper Size	3.5" x 2.2" (89 x 56 mm)
ADF Capacity	20 pages (20 lb. / 75 g/m2 paper)
Duty Cycle	500 pages per day

* US Letter/A4 size

** Excluding ADF and output tray extension



Minimum System Requirements

PC

- Pentium IV or equivalent processor
- Windows 7 / Vista / XP
- 512 MB RAM (1 GB RAM for Windows 7)
- 350 MB available hard disk space
- DVD-ROM drive
- USB port

Mac

- 1.6 GHz or faster PowerPC G5 or 1.83 GHz or faster Intel Core processor
- Mac OS X v10.4, v10.5, or later
- 512 MB RAM (1 GB recommended)
- 350 MB available hard-disk space
- CD-ROM drive
- USB port

Package Contents

- Strobe 500 Scanner
- Strobe 500 Docking Station
- USB Cables & AC Power Adapter
- Quick Install Card
- User's Manual on disc
- PC DVD-ROM and Mac CD-ROM

PC Software

- Nuance PaperPort
- Nuance OmniPage
- NewSoft Presto! BizCard
- Visioneer OneTouch with Kofax VRS technology
- TWAIN & WIA Drivers

Mac Software

- ExactScan 2 Lite Capture Application
- NewSoft Presto! PageManager

©2012 The Visioneer brand name and logo and Visioneer OneTouch are registered trademarks of Visioneer, Inc. All rights reserved. Strobe™ is a trademark of Visioneer, Inc. Nuance®, OmniPage® and PaperPort® are registered trademarks of Nuance Communications, Inc. (NASDAQ: NUAN) or its affiliates in the United States and/or other countries. Kofax®, and VirtualReScan™ (VRS), are trademarks of Kofax Image Products, Inc. The Windows XP® logo, Windows Vista® and Windows 7 are trademarks of Microsoft Corporation. The Mac® logo is a trademark of Apple Inc., registered in the U.S. and other countries. Universal Serial Bus is a trademark of USB Implementers Forum, Inc. (USB-IF). TWAIN is a trademark of TWAIN Working Group. All other trademarks are the property of their respective owners and acknowledged. Prices, features, specifications, capabilities, appearance and availability of Visioneer products and services are subject to change without notice. Patent Numbers: 6,704,124 - 6,275,309 - 6,459,506 - 5,816,976 - 5,499,108 - 5,517,332 - 6,480,304 - D966,650

www.UniLinkinc.com

800.666.2980

Sales@UniLinkinc.com