



To order or for more information:

Tel: 1-800-666-2980

E-mail: info@unilinkinc.com

Web: www.unilinkinc.com

BENEFITS AT A GLANCE

- Secure, integrated solution for content, signature capture and device management
- Customizable and scalable to meet any requirements
- Uses existing IP network to eliminate costly and disruptive changes
- Complies with the latest security regulations



PAYware Vision

Exciting Possibilities and Improved Efficiencies for Merchants

VeriFone's PAYware Vision is a powerful set of software solutions that offers exciting new sales and promotional possibilities, can significantly simplify terminal estate operations, and substantially cut dispute resolution costs by electronically capturing and storing signatures.

PAYware Vision gathers critical business intelligence for informed decision-making by providing a high-level view of every aspect of a terminal estate. It also provides retailers a better way to manage data flow, deliver targeted marketing content, reduce costs,

manage receipts and resolve disputes. From one interface, retailers can receive encrypted, electronic signatures and receipts from payment devices, monitor the status and performance of each payment device in the network, and deliver colorful, rich media content including full digital video, sound and graphics to a captive audience.

The suite consists of three independent, yet easily integrated modules: Content Manager, Device Manager and Signature Manager. They are browser-based for ease of use, highly scalable, and readily customizable to your

unique organizational structure or requirements. PAYware Vision also helps retailers comply with PCI DSS security initiatives.

PAYware Vision can be implemented at the in-store, regional or enterprise levels, and VeriFone Professional Services are available to ensure the project is completed thoroughly.



PAYware Vision



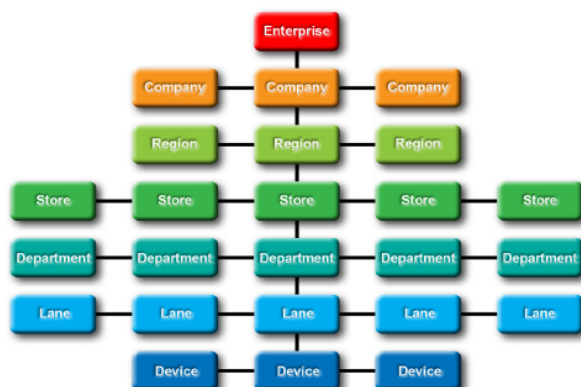
To order or for more information:

Tel: 1-800-666-2980

E-mail: info@unilinkinc.com

Web: www.unilinkinc.com

PAYware Vision



PAYware Vision provides a global view of an entire payment network and enables troubleshooting and software downloads via remote access.

Features & Benefits

Easy to Implement and Use

- Solution sets sold individually or together include graphical content delivery, signature archiving and retrieval and device management
- "Back channel" configuration minimizes changes to existing POS infrastructure, reducing expensive software changes and streamlining integration
- Schedules and delivers messages and information by enterprise, company, region, department, store, or lane for more precise targeting
- Software runs on in-store, regional, or enterprise-level servers, connected directly over IP to payment devices
- Intuitive, browser-based user interface provides global view of your entire payment network
- Graphic-driven dashboards and reporting help merchants monitor critical data and manage workflow

Powerful and Functional

- Content Manager offers a versatile platform to manage, store and deliver colorful, rich media content and graphics to a variety of POS devices
- Device Manager makes it easy for retailers to deploy, manage and support payment devices. Automated tracking of device serial numbers and offline conditions helps retailers maintain PCI PED Best Practices
- Signature Manager eliminates a PCI DSS headache for retailers - storing and securing receipts for resolving disputes - by electronically capturing, managing, retrieving and archiving signatures and receipts

Secure, Flexible and Reliable

- All solutions are designed to fully comply with PCI initiatives

SYSTEM REQUIREMENTS

Payment Devices Supported

- MX800 Series
- Ethernet required, serial-connected optional
- API available for non-VeriFone terminals

Signature Formats Supported

- 3-Byte ASCII
- VeriFone RAW Format
- TIFF
- PNG

IP Address Schemes

- Fixed
- Dynamic (DHCP)

Operating System

- Red Hat Linux 4.x

Database

- Postgres (included)

Processor

- Dual 32-bit processors; speed dependent on needs analysis

Browser

- Internet Explorer 6.0 or higher
- Firefox

Memory

- 12 GB

Hard Drives

- Varies by customer requirements

Brought to you by

UniLink



www.unilinkinc.com