

## imageCLASS MF642Cdw

Color | Compact | Multifunction

Print up to 22 ppm

Print up to 8-1/2" x 14"

250-sheet maximum paper capacity

Three-year limited warranty standard

Designed for small and medium-size businesses, the Canon Color imageCLASS MF642Cdw offers feature rich capabilities with high quality and minimal maintenance. Print, scan, and copy capabilities help you accomplish necessary tasks with just one machine. A 5" color touchscreen delivers an intuitive user experience and can be customized by a device administrator to simplify many daily tasks.



### USABILITY

- 5" intuitive color touchscreen with smartphone-like usability.
- A unique, customized device experience with Application Library.
- Create Wi-Fi® Direct hotspot from the printer to establish direct connection to mobile device(s) without the need for external router.



### QUALITY AND RELIABILITY

- Canon's signature reliability and engine technologies help keep productivity high and minimize the impact on support resources.
- Intuitive maintenance videos for common tasks like consumables replacement.



### WORKFLOW EFFICIENCY

- Supports mobile solutions for printing and scanning.
- Scan and convert documents to searchable digital files through a simplex document feeder.
- Designed for small print jobs with first-print time as fast as 10.3 seconds.



## COST EFFICIENCY

- High-capacity, all-in-one cartridge helps reduce overall supply costs.
- Out-of-the-box, standard two-sided printing plus the ability to print multiple pages onto one sheet helps to reduce paper consumption.

## SECURITY FEATURES

- Helps mitigate risk of confidential information loss as documents are only stored in short-term memory.
- Security settings can be set behind an administrator log-in.

## SUSTAINABILITY

- A combination of fusing technologies and low-melting-point toner minimizes power requirements and therefore uses little energy.
- Encourages environmentally conscious work practices by enabling multiple settings that can help save paper and energy.
- ENERGY STAR® certified and rated EPEAT® Silver.<sup>1</sup>

## KEY FEATURES



## EASY TO USE WITH APPLICATION LIBRARY

Unique to the Canon imageCLASS product line, the Application Library platform allows for one-touch button creation of key functions: Print Template, Standby Slide (screen saver), Scan-to-Preset Destination, ID Card Copy, Consumables Information, Copy (Eco), Copy (Bleed Reduce), Passport Copy, Fax and Store, Copy (Enhance Text), Name and Scan.



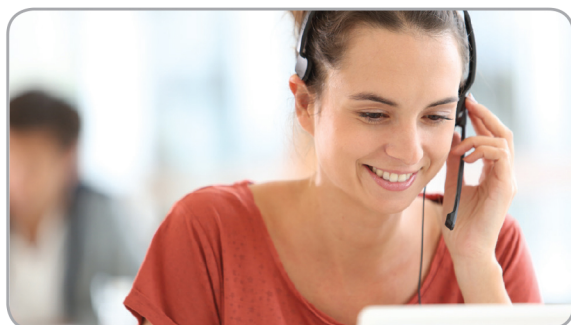
## MOBILE-FRIENDLY DEVICE ACCESS

From application-based to cloud-based to device native, the imageCLASS MF642Cdw model offers a variety of methods for printing from a mobile phone or tablet across iOS and Android devices. The Canon PRINT Business application, which supports both platforms, offers access to additional device settings as well as the ability to scan from the printer to most mobile phone or tablet.



## EFFICIENT DOCUMENT SCANNING

The imageCLASS MF642Cdw leverages a document feeder for scanning at up to 28 images per minute (ipm) in black and white or up to 14 ipm in color. Scanned files can be converted into multiple file formats, including Hi-Compression PDF and Searchable PDF (OCR).



## 100% U.S.-BASED SERVICE AND SUPPORT

From cutting-edge technology to industry-leading response times, Canon U.S.A. takes pride in delivering complete customer satisfaction. Canon's award-winning, 100% U.S.-based, friendly, and knowledgeable Customer Service team provides expert assistance for every level of experience. The imageCLASS MF642Cdw device comes with a three-year limited warranty, giving you the support, peace of mind, and value your business deserves.



SPECIFICATIONS

Main Unit

Core Functions

Standard: Print, Copy, Scan, Send

Item Code

3102C012

Processor

Canon Custom Processor

Control Panel

5" Color Touch Panel

Memory

1 GB

Standard Interface Connection

USB 2.0 x2 (Host), USB 2.0 x1 (Device) High-Speed,  
10/100/1000Base-T Ethernet (Network), Wi-Fi  
802.11b/g/n, Wi-Fi® Direct Connection

Paper Capacity (Letter, 20 lb. Bond)

Standard: 250 Sheets

Paper Sources (Letter, 20 lb. Bond)

Standard: 250-sheet Paper Cassette,  
1-sheet Stack Bypass

Paper Output Capacity (Letter, 20 lb. Bond)

Standard: 75 Sheets

Supported Media Types

Cassettes: Thin, Plain, Recycled, Color, Thick, Coated,  
Label, Letter, Envelope (10 Envelopes),  
Custom (Min. 3" x 5" to Max. 8.5" x 14"),  
Envelope: COM10, Monarch, C5, DL  
Manual Feed Slot: Thin, Plain, Recycled, Color, Thick, Coated,  
Label, Letter, (1 Envelope)

Supported Media Sizes

Cassettes: A4, A5, B5, Letter, Legal, Statement,  
Executive  
Manual Feed Slot: Letter, Legal, Statement, Executive  
Envelope: COM10, Monarch, C5, DL  
Custom (Min. 3" x 5" to Max. 8.5" x 14")

Supported Media Weights

Cassettes: 16 lb. Bond to 53 lb. Bond ( 60 to 200 g/m²)  
Manual Feed Slot: 16 lb. Bond to 53 lb. Bond ( 60 to 200 g/m²)

Warm-up Time

From Power On: 13 Seconds or Less  
From Sleep 6.1 Seconds or Less  
Mode:

Dimensions (W x D x H)

Standard 16.9" x 16.5" x 16.5"  
(Desktop): (429 mm x 419 mm x 419 mm)

Installation Space (W x D x H)

Standard 20.9" x 39.9" x 27.1"  
(Desktop): (530 mm x 1011 mm x 689 mm)

Weight<sup>2</sup>

Unit: Approx. 48.4 lb. (22.0 kg)  
Boxed Weight: Approx. 64 lb. (29.0 kg)

Supported OS

Windows 7/Windows 8.1/Windows 10/Windows Server  
2008/Windows Server 2008 R2/Windows Server 2012/  
Windows Server 2012 R2/Windows Server 2016/  
Mac OS X v10.9.5 (or later)

What Comes In The Box

MF642Cdw Product, Cartridge 054 CMY Starter: 680  
Yield/Black Standard: 1,500 Yield, Power Cord, Starter  
Guide, User Software DVD-ROM, Warranty Card

Print Specifications

Printing Method

Laser Beam Printing

Print Speed<sup>3</sup>

Up to 22 ppm (Letter); Up to 17.9 ppm (Legal)

First-Print-Out Time

Approx. 10.3 Seconds

Recommended Monthly Page Volume

150 - 2,500 Pages

Print Resolution (dpi)

600 x 600

Standard Page Description Languages

UFR II

Double-Sided Printing

Automatic (Standard)

Direct Print

Available from USB Memory (JPEG, TIFF, PDF)

Printing from Mobile and Cloud-based Services<sup>4</sup>

Apple® AirPrint®, Canon PRINT Business, Mopria™  
Print Service

Copy Specifications

Copy Speed

Up to 22 ppm (Letter); Up to 17.9 ppm (Legal)

First-Copy-Out Time (Letter)

Platen: 11.2 seconds/13.1 seconds (BW/Color)  
ADF: 12.1 seconds/14.2 seconds (BW/Color)

Copy Resolution (dpi)

600 x 600

Copy Size

Platen: Up to Letter  
ADF: Up to Legal

Multiple Copies

Up to 999 Copies

Magnification

25% - 400% (1% Increments)

Preset Reductions

25%, 50%, 64%, 78%

Preset Enlargements

129%, 200%, 400%

Copy Features

Paper Setting, Favorite Setting, Two-sided, Original Type  
Selection, Cancel, N-on-1, Density Adjustment, Sharpness,  
Erase Frame, Collate, Copy ID Card

Scan Specifications

Type

Simplex Automatic Document Feeder

Document Feeder Paper Capacity

50 Sheets (20 lb. Bond)

Document Feeder Supported Media Sizes

Legal, Letter, Statement

Document Feeder Supported Media Weights

13-28 lb. Bond (50-105 g/m²)

Platen Acceptable Originals

Sheet, Book

Pull Scan

ScanGear MF for TWAIN, and WIA

Scan Resolution (dpi)

300 x 600, 600 x 600

Scan-to-Mobile Devices

Canon PRINT Business

Scan Speed (Letter)

Single-sided: 14/28 ipm (300 x 600 dpi) (Color/BW)

Memory Media

Standard USB Memory (JPEG, TIFF, PDF)

Send Specifications

Destination

Email/Internet FAX (SMTP), SMB, FTP

Address Book

LDAP (50)/Local (300)/Speed Dial (281)

Send Resolution (dpi)

600 x 600 (Pull Scan), 196 x 204 (iFax), 300 x 300 (Other)

Communication Protocol

File: FTP, SMB  
Email/iFax: SMTP, POP3, iFax (Simple)

File Format

Standard: TIFF, JPEG, PDF (Compact, Searchable)  
Optional: PDF (Encrypted, Digital Signature)

Security Specifications

Authentication

Standard: Department ID Authentication

Network

Standard: IP/MAC Address Filtering, IPSEC, TLS  
Encrypted, Communication, SNMP V3.0,  
IEEE 802.1X(Wired Only), IPv6, SMTP  
Authentication, POP Authentication,  
POP Authentication before SMTP

Document

Standard: Secure Print

Wi-Fi Authentication Methods

Wi-Fi  
Infrastructure Mode: WEP 64/128 bit, WPA-PSK (TKIP/AES),  
WPA2-PSK (AES)  
Wi-Fi Access Point: WPA2-PSK (AES)

Environmental Specifications

Operating Environment

Temperature: 50 to 86° F  
Humidity: 20 to 80% RH (no condensation)

Power Requirements

AC 120-127 V:6.5 A, 60 Hz

Power Consumption

Maximum: Approx. 900 W  
Standby: Approx. 10.5 W  
Sleep Mode: Approx. 0.8 W  
Typical 0.22 kWh  
Electricity Consumption  
(TEC) Rating:

Standards

ENERGY STAR® Qualified, Rated EPEAT Silver<sup>1</sup>



## SERVICE PLANS AND CONSUMABLES



imageCLASS MF642Cdw  
Item Code: 3102C012

### Extended Service Plans Available For Purchase

#### Canon eCarePAK (Exchange/Carry-In)

Canon extended service plans extend standard three-year limited warranty<sup>5</sup> support to cover additional one to two years.

One-Year: 5707B042

Two-Year: 5707B043

If service is required, you may receive a replacement model\* via advanced exchange. In this case, you'll be instructed to return the damaged unit to Canon in the replacement packaging, which also includes a prepaid shipping label. Or you may choose to carry your existing equipment to a local Authorized service facility for repair.

\* Replacement model may be new or refurbished quality.

### GENUINE® CONSUMABLES

Always look for the Canon anti-counterfeiting hologram on your Canon GENUINE product packaging.



Cartridge 054 <sup>▲</sup> Starter C/M/Y		Yields 680 Pages
Cartridge 054 <sup>▲</sup> Black	Item No.: 3024C001	Yields 1,500 Pages
Cartridge 054 H Black	Item No.: 3028C001	Yields 3,100 Pages
Cartridge 054 Cyan	Item No.: 3023C001	Yields 1,200 Pages
Cartridge 054 H Cyan	Item No.: 3027C001	Yields 2,300 Pages
Cartridge 054 Magenta	Item No.: 3022C001	Yields 1,200 Pages
Cartridge 054 Yellow	Item No.: 3021C001	Yields 1,200 Pages
Cartridge 054 H Magenta	Item No.: 3026C001	Yields 2,300 Pages
Cartridge 054 H Yellow	Item No.: 3025C001	Yields 2,300 Pages

Use of Canon GENUINE toner cartridges helps provide longer equipment life, high yields, reliable performance, high-quality output, and minimal jamming or issues.

- ▲ This Cartridge is included with purchase.
- Not available for separate purchase.

<sup>1</sup> For latest EPEAT ratings (Gold/Silver/Bronze), please visit [www.epeat.net](http://www.epeat.net).

<sup>2</sup> Includes consumables.

<sup>3</sup> Print speed is based on internal testing. Print speed may vary, depending on the number of copies selected as well as the settings for size, type, and orientation of paper.

<sup>4</sup> Canon PRINT Business is a free app available on the App Store<sup>®</sup> and Google Play<sup>™</sup> Store. For more information, including compatibility, please visit <https://www.usa.canon.com/mobile-app>. Please see the respective websites for Apple AirPrint and Mopria Print Service for compatibility and additional information.

<sup>5</sup> Warranty program is subject to certain conditions and restrictions. See warranty card for details.

USA.CANON.COM

**Canon**

**UniLink**

Sales@UniLinkinc.com | [www.UniLinkinc.com](http://www.UniLinkinc.com) | 800.666.2980

Wi-Fi<sup>®</sup> is a registered trademark of the Wi-Fi Alliance<sup>®</sup>. As an ENERGY STAR partner, Canon U.S.A., Inc. has qualified these models as meeting the ENERGY STAR energy efficiency criteria through an EPA recognized certification body. ENERGY STAR and the ENERGY STAR mark are registered U.S. marks. Canon, imageCLASS, and the GENUINE logo are registered trademarks of Canon Inc. in the United States and may also be registered trademarks or trademarks in other countries. Canon products offer certain security features, yet many variables can impact the security of your devices and data. Canon does not warrant that use of these features will prevent security issues. Nothing herein should be construed as legal or regulatory advice concerning applicable laws; customers must have their own qualified counsel determine the feasibility of a solution as it relates to regulatory and statutory compliance. All other referenced product names and marks are trademarks of their respective owners. Specifications and availability subject to change without notice. Not responsible for typographical errors.

©2020 Canon U.S.A., Inc. All rights reserved.

